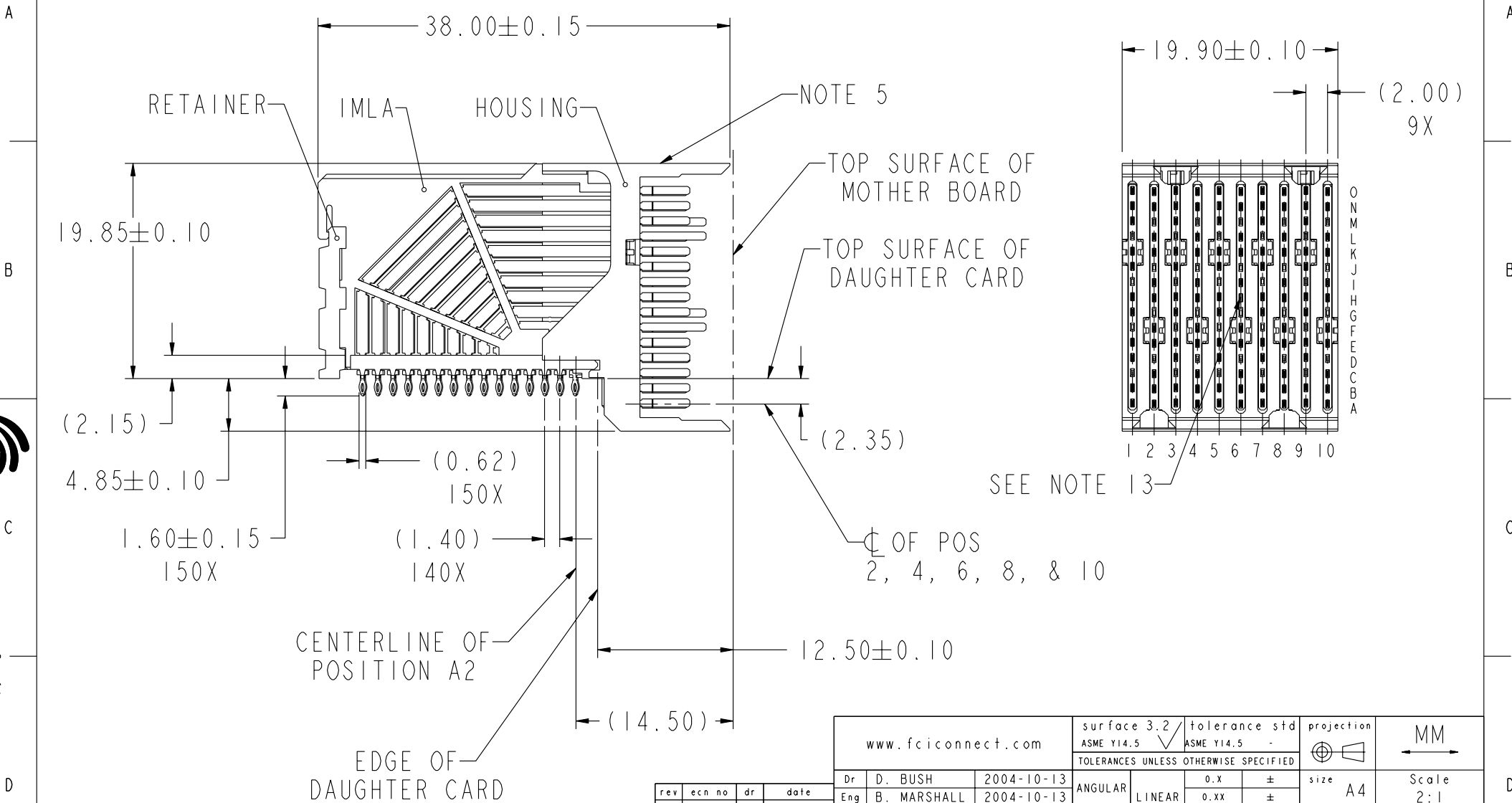


PRODUCT NUMBER  
SEE TABLE, SHEET 5



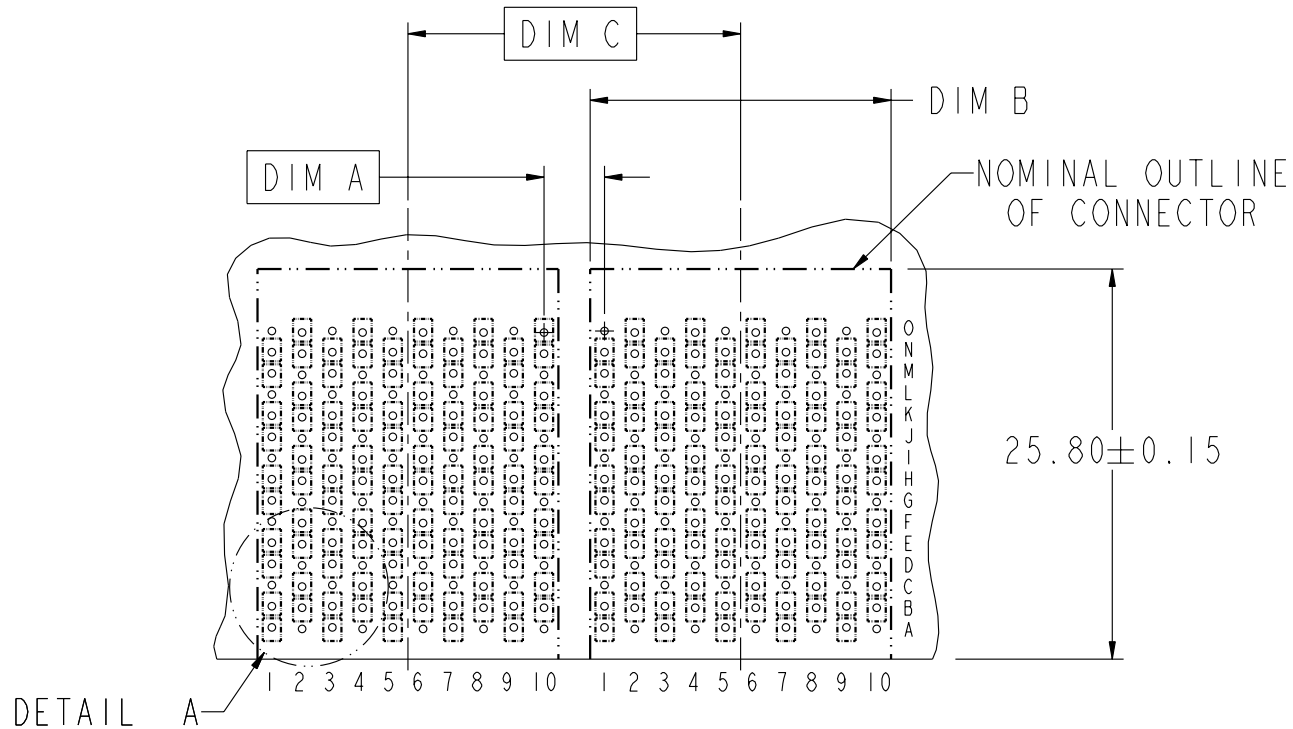
Copyright FCI.

rev	ecn no	dr	date
A	V04-1026	DAB	2004-10-13
B	V04-1120	DAB	2004-11-09
C	V04-1194	DAB	2004-12-27
D	V05-0105	TH	2005-02-09
E	V05-0226	MRS	2005-03-10
F	V05-0748	CH	2005-08-23
G	S06-0374	CH	2006-12-21

www.fciconnect.com		surface 3.2 ASME Y14.5	tolerance std ASME Y14.5	projection MM
		TOLERANCES UNLESS OTHERWISE SPECIFIED		MM
Dr	D. BUSH	2004-10-13	ANGULAR	0.X ±
Eng	B. MARSHALL	2004-10-13	LINEAR	0.XX ±
Chr	C. H. TAN	2006-12-21	0° ±	0.XXX ±
Appr	JOEY NG	2006-12-21	Product family	AirMax VS
			Spec ref	ECN ***
FCI logo			AirMax VS R/A HEADER ASSY	Scale 2:1
			PRESS-FIT, 150 POS, 20MM	ECN ***
catalog no			-	Customer
dwg no			10016527	Rev. G
			CUSTOMER	sheet 1 of 5

REV F - 2006-04-17

DESCRIPTION	DIM A	DIM B	DIM C
2-20MM MODULES PLACED END-TO-END	2.00	19.90 2X	20.00
1-20MM MODULE & 1-22MM MODULE PLACED END-TO-END	3.00	19.90 1X & 21.90 1X	21.00



RECOMMENDED PCB LAYOUT  
FOR DIFFERENTIAL APPLICATIONS  
COMPONENT SIDE  
(TWO ADJACENT FOOTPRINTS SHOWN)  
NOTES 6 & 7



title AirMax VS R/A HEADER ASSY  
PRESS-FIT, 150 POS, 20MM  
catalog no -

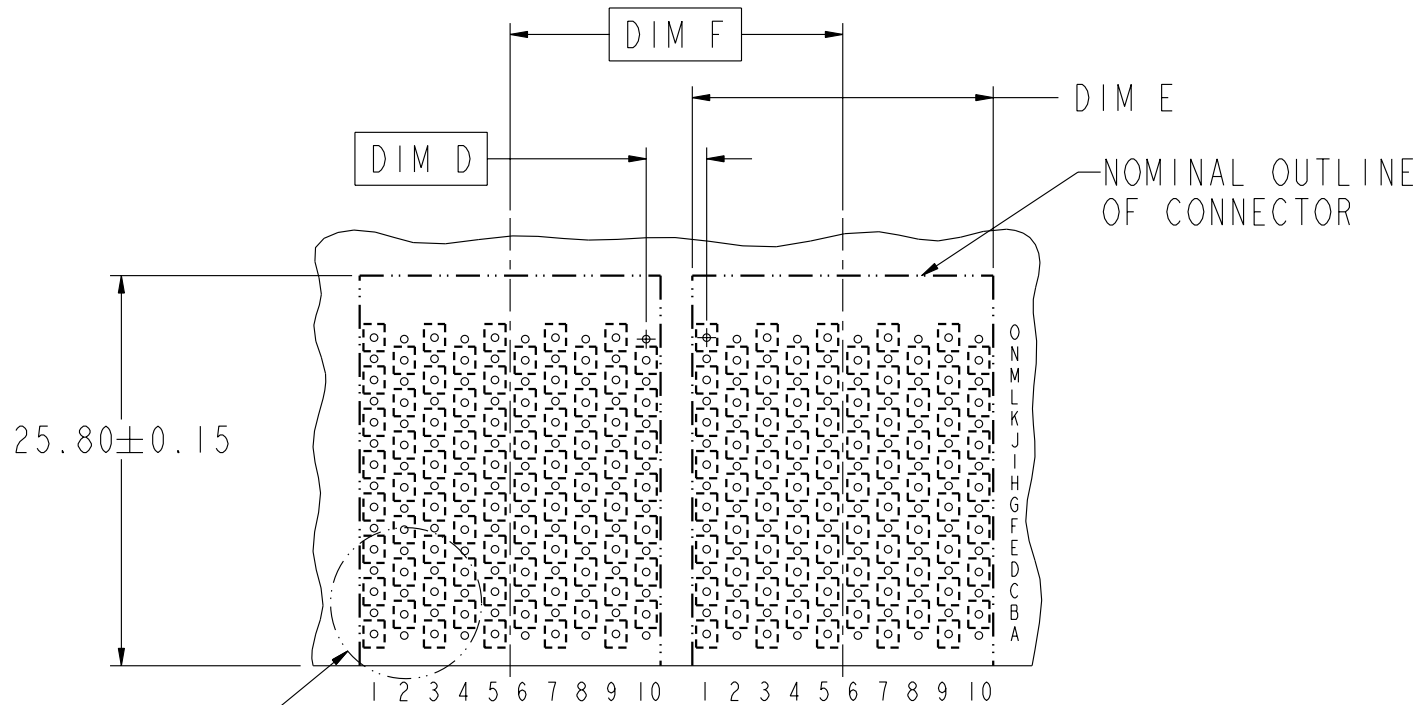
dwg no 10016527

Rev. G

CUSTOMER sheet 2 of 5



DESCRIPTION	DIM D	DIM E	DIM F
2-20MM MODULES PLACED END-TO-END	2.00	19.90 2X	20.00
1-20MM MODULE & 1-22MM MODULE PLACED END-TO-END	3.00	19.90 1X & 21.90 1X	21.00



DETAIL B

RECOMMENDED PCB LAYOUT  
FOR SINGLE ENDED APPLICATIONS  
COMPONENT SIDE  
(TWO ADJACENT FOOTPRINTS SHOWN)  
NOTES 6 & 7



title AirMax VS R/A HEADER ASSY  
PRESS-FIT, 150 POS, 20MM  
catalog no -

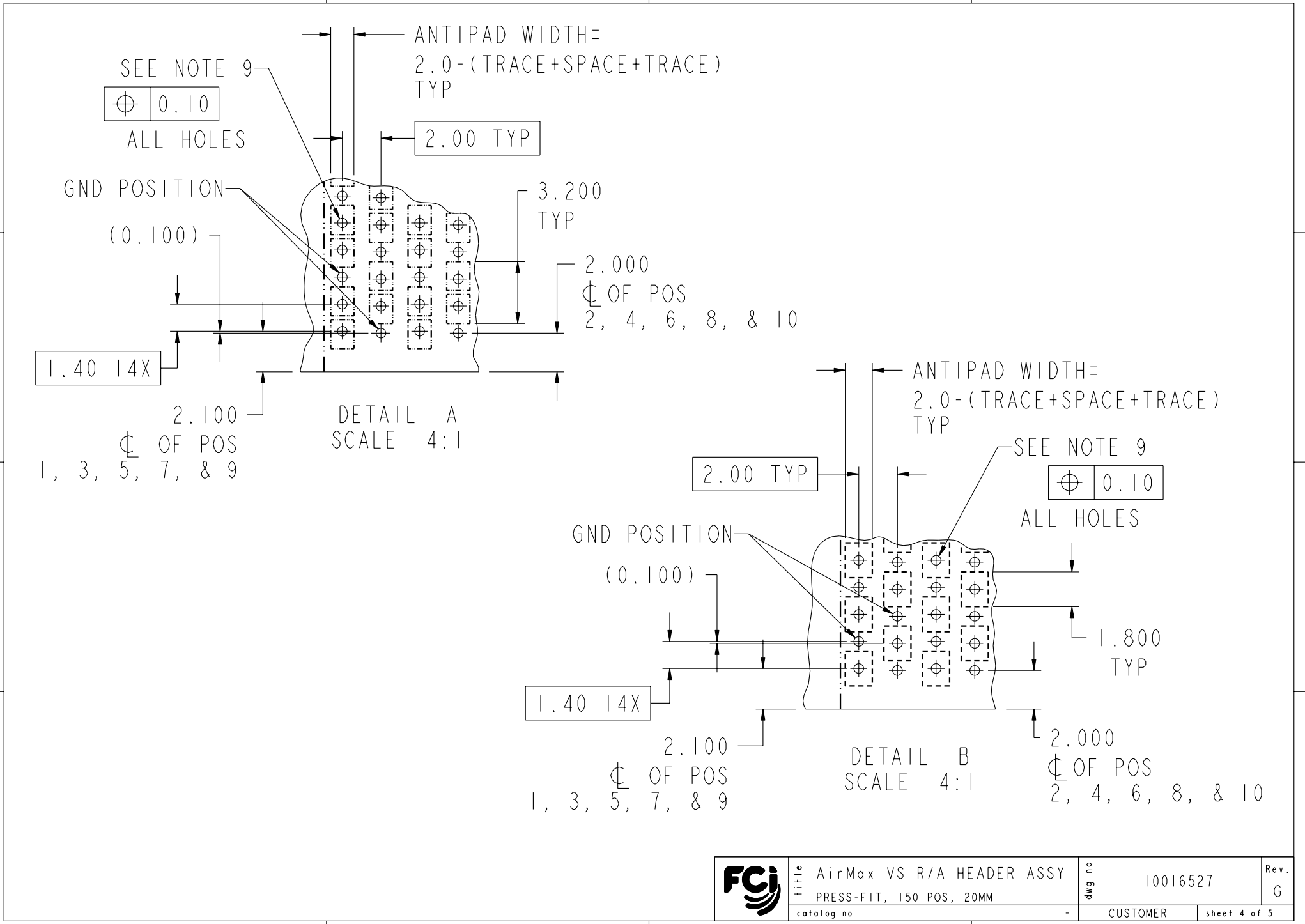
dwg no 10016527

Rev. G

CUSTOMER sheet 3 of 5



Copyright FCI.



REV F - 2006-04-17

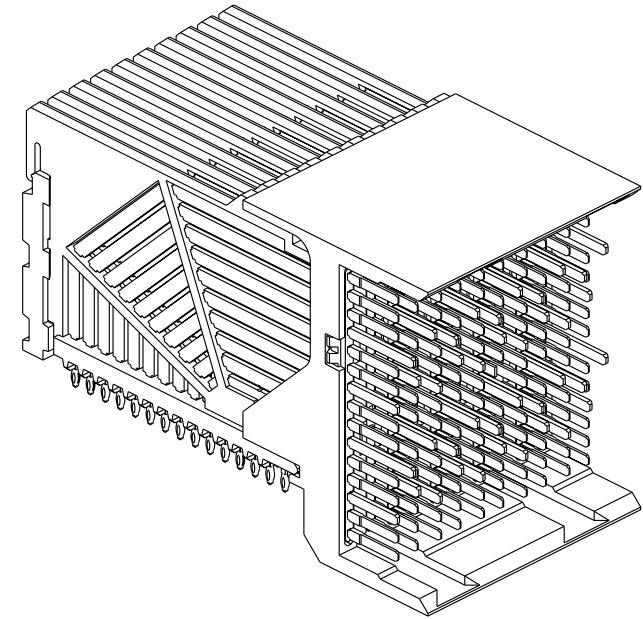


Part No. AirMax VS R/A HEADER ASSY  
 PRESS-FIT, 150 POS, 20MM  
 catalog no -

dwg no 10016527  
 CUSTOMER sheet 4 of 5

Rev. G

PART NUMBER	PRESS-FIT TAIL PLATING TYPE	SHORT DETECT CONTACT
10016527-101	TIN/LEAD ALLOY OVER NICKEL	NO
10016527-101LF	TIN OVER NICKEL (LEAD FREE)	
10016527-111	TIN/LEAD ALLOY OVER NICKEL	YES (SEE NOTE 13)
10016527-111LF	TIN OVER NICKEL (LEAD FREE)	



NOTES:

1. CONNECTOR MATERIALS:  
 HOUSING & RETAINER: HIGH TEMP THERMOPLASTIC, NATURAL, UL94V-0  
 IMLA PLASTIC: HIGH TEMP THERMOPLASTIC, BLACK, UL94V-0  
 CONTACT: COPPER ALLOY

2. CONTACT PLATING:  
 SEPARABLE INTERFACE:  
 PERFORMANCE-BASED PLATING, QUALIFIED TO MEET THE REQUIREMENTS OF FCI PRODUCT SPECIFICATION GS-12-239 INCLUDING TELCORDIA GR-1217-CORE (NOVEMBER 1995) CENTRAL OFFICE TEST SEQUENCE

PRESS-FIT TAILS: SEE TABLE

3. PRODUCT SPECIFICATION: GS-12-239

4. APPLICATION SPECIFICATION: GS-20-035

5. PRODUCT MARKING, (PART NUMBER & LOT CODE), ON THIS SURFACE

6. REFER TO CUSTOMER DRAWING 10035911 FOR INFORMATION REGARDING PCB LAYOUT OF POWER AND GUIDE MODULES RELATIVE TO SIGNAL MODULES

7. POSITIONS F AND L OF ODD NUMBERED COLUMNS AND POSITIONS G AND M OF EVEN NUMBERED COLUMNS CORRESPOND TO EARLY MATE HEADER PINS

8. THERE IS NO GROUND BUSSING WITHIN THE CONNECTOR SYSTEM

9. REFER TO CUSTOMER DRAWING 10045979 FOR INFORMATION ON PCB HOLE DIAMETERS AND PLATING OPTIONS.
10. LEAD FREE PRODUCT MEETS EUROPEAN UNION DIRECTIVES & OTHER COUNTRY REGULATIONS AS DESCRIBED IN GS-22-008
11. THE HOUSING WILL WITHSTAND EXPOSURE TO 260°C PEAK TEMPERATURE FOR 40 SECONDS IN A CONVECTION, INFRA-RED OR VAPOR PHASE REFLOW OVEN.
12. PACKAGING MEETS GS-14-920 LEAD FREE LABELING SPECIFICATION.
13. MATING PIN H6 HAS 0.5mm LESS WIPE THAN THE SHORTEST SIGNAL PIN.

FCI	title	AirMax VS R/A HEADER ASSY	dwg no	10016527	Rev.	G
	catalog no	PRESS-FIT, 150 POS, 20MM	-	CUSTOMER	sheet 5 of 5	



Copyright FCI.